

Modeling material requirements of the transition to HALEU fueled reactors

Amanda M. Bachmann, Kathryn D. Huff
Advanced Reactors and Fuel Cycles Group

University of Illinois at Urbana-Champaign

June 28, 2021



ILLINOIS



① Introduction

② Methodology

③ Results

④ Conclusions

Introduction

Multiple new reactor designs will require High Assay Low Enriched Uranium (HALEU) fuel, which allows for:

- Longer cycle times
- Higher burnups

To meet the HALEU demand, the U.S. Department of Energy (DOE) has proposed two methods [2]:

- Recovery and downblending of High Enriched Uranium (HEU)
- Enrichment of natural uranium

Determining which method to use, or how to combine them, will depend on the material requirements of the reactor(s) deployed.

Objectives

This work simulates multiple transition scenarios to HALEU-fueled reactors and aims to:

- Quantify material requirements of the transition to reactors fueled by HALEU:
 - Number of reactors deployed
 - Ability to meet energy demand
 - Mass of uranium supplied to reactors
 - Separative Work Unit (SWU) capacity to enrich uranium
- Compare the material requirements of a small reactor with a long cycle time (Ultra Safe Nuclear Corporation (USNC) Micro Modular ReactorTM (MMRTM)) and a medium-sized reactor with on-line refueling (X-energy Xe-100)
- Identify how each HALEU production method can be used to meet the material requirements



Outline

- ① Introduction
- ② Methodology
- ③ Results
- ④ Conclusions

Methodology

Simulated 5 fuel cycle scenarios in CYCLUS [4]:

- **Scenario 1:** Current fleet of Light Water Reactors (LWRs)
- **Scenario 2:** No growth transition to USNC MMR™
- **Scenario 3:** No growth transition to X-energy Xe-100
- **Scenario 4:** 1% growth transition to USNC MMR™
- **Scenario 5:** 1% growth transition to X-energy Xe-100

Table 1: Advanced reactor design specifications

Design Criteria	USNC MMR™ [6]	X-energy Xe-100 [3] [5]
Reactor Type	Modular HTGR	Modular HTGR
Power Output (MWe)	10	75
Enrichment (% ²³⁵ U)	13	15.5
Cycle Length (yr)	20	Online Refuel
Fuel Form	TRISO Compacts	TRISO Pebbles
Reactor Lifetime	20 years	60 years
Burnup ($\frac{MWd}{kgU}$)	42.7	160

Simulation Details

- Simulations model reactor deployment from 1965-2090
- LWR commission dates are obtained from the IAEA Power Reactor Information System (PRIS) database [1]
- LWRs are assumed to operate for 60 years, unless they were decommissioned by December 2020
- Transitions begin in 2025
- Timestep of one month

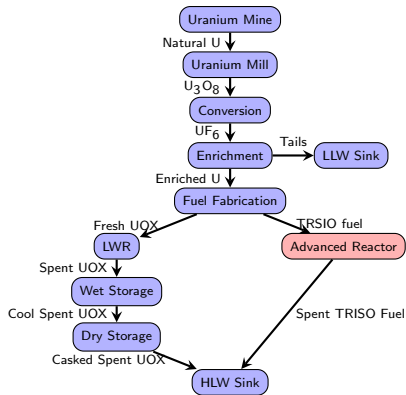


Figure 1: Fuel cycle facilities and material flow between facilities in the CYCLUS models.

Agent Hierarchy

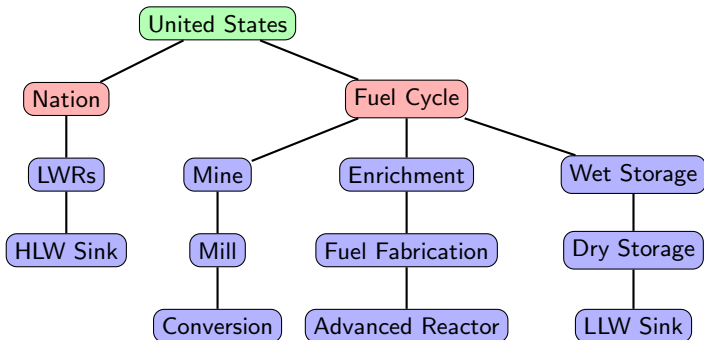


Figure 2: Organization of agents in the simulations, green shows the region, red shows the institutions, and blue shows the facilities.



Outline

- 1 Introduction
- 2 Methodology
- 3 Results**
- 4 Conclusions

Reactor Deployment

- The last LWR is decommissioned in 2076
- In the no growth scenarios (Scenarios 2 and 3) the advanced reactors are deployed starting in October 2031
- In the 1% growth scenarios (Scenarios 4 and 5) the advanced reactors are deployed starting in March 2029
- The maximum number of advanced reactors deployed at one time in Scenarios 2-5 are 9182, 1225, 17656, and 2361 reactors, respectively

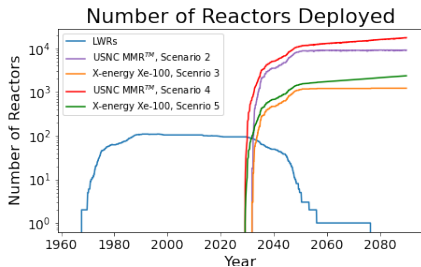
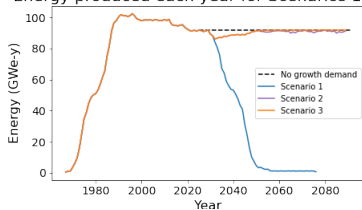


Figure 3: Reactor deployment schedule for LWRs and advanced reactors.

Energy

- Energy produced by LWRs in Scenario 1 in 2025 is 91.818 GWe-y
- Scenarios 2 and 3 do not meet demand between 2030-2050
- Scenarios 4 and 5 do not meet demand between 2026-2048
- Noticable deviations from demand in Scenarios 2, 4 when new reactors are deployed
- Initial gap between demand and energy produced is due to how the ManagerInst responds to the demand of the GrowthRegion

Energy produced each year for Scenarios 1, 2, 3



Energy produced each year for Scenarios 1, 4, 5

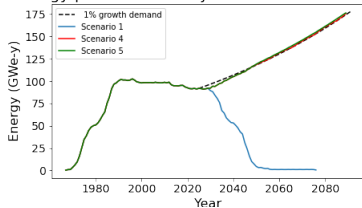
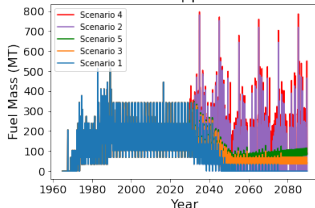


Figure 4: Energy produced each year by all reactors in Scenarios 1-3 (top) and Scenarios 1, 4, 5 (bottom)

Uranium Mass Supply

- All scenarios have the same uranium demands until advanced reactors are deployed
- Large peaks in Scenarios 2 and 4 correspond to the deployment of new reactors
- Less variation with time in the uranium supplied to reactors for Scenarios 3 and 5 than Scenarios 2 and 4

Mass of uranium supplied to all reactors



Mass of uranium supplied to advanced reactors

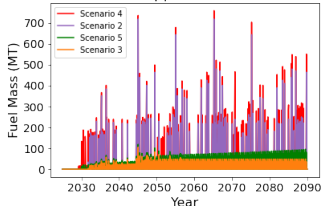


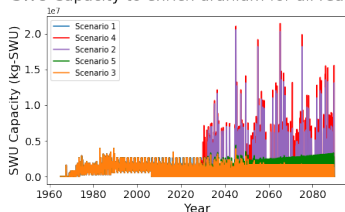
Figure 5: Uranium mass sent to all reactors (top) and only advanced reactors (bottom)



SWU Requirements

- Follows similar pattern to uranium mass
- Scenarios 2 and 4 require the most SWU because of the large mass of uranium, despite a lower enrichment level for the advanced reactors Scenarios 3 and 5

SWU Capacity to enrich uranium for all reactors



SWU Capacity to enrich uranium for advanced reactors

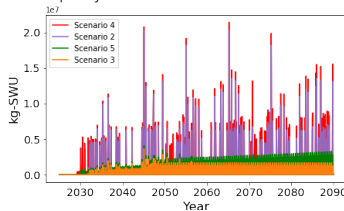


Figure 6: SWU required to produce enriched uranium for all reactors (top) and only advanced reactors (bottom)

Outline



① Introduction

② Methodology

③ Results

④ Conclusions

Conclusions

- Simulated 5 fuel cycle scenarios to investigate the material requirements of deploying HALEU-fueled reactors
- Transitions to the X-energy Xe-100 reactor are better able to meet the energy demand of the scenarios due to longer lifetimes
- Transitions to the USNC MMRTM have significantly more material requirements than transitions to the X-energy Xe-100
- Changing to a 1% growth demand model requires advanced reactors to be deployed 2.5 years earlier

Ongoing Work

- Incorporate LWR license expiration dates
- Increase the amount of time in the scenario, change end date to 2125 to include replacement of X-energy Xe-100 reactors
- Determine how much HEU is needed to produce the required HALEU for each scenario

Acknowledgements

This material is based upon work supported under an Integrated University Program Graduate Fellowship. Any opinions, findings, conclusions, or recommendations expressed in this publication are those of the author(s) and do not necessarily reflect the views of the Department of Energy Office of Nuclear Energy.

Prof. Huff is supported by the Nuclear Regulatory Commission Faculty Development Program (award NRC-HQ-84-14-G-0054 Program B), the Blue Waters sustained-petascale computing project supported by the National Science Foundation (awards OCI-0725070 and ACI-1238993) and the state of Illinois, the DOE ARPA-E MEITNER Program (award DE-AR0000983), and the DOE H2@Scale Program (Award Number: DE-EE0008832)

References I

- [1] *Power Reactor Information System (PRIS): Reference and On-line Access Manual*.
Number 507 in TECDOC Series. INTERNATIONAL ATOMIC ENERGY AGENCY, Vienna, 1989.
- [2] Andy Griffith.
Overview of NE's High-Assay Low Enriched Uranium (HALEU) Program, April 2020.
- [3] Bowers Harlan.
X-energy Xe-100 Reactor initial NRC meeting, September 2018.
- [4] Kathryn D. Huff, Matthew J. Gidden, Robert W. Carlsen, Robert R. Flanagan, Meghan B. McGarry, Arrielle C. Opotowsky, Erich A. Schneider, Anthony M. Scopatz, and Paul P. H. Wilson.
Fundamental concepts in the Cyclus nuclear fuel cycle simulation framework.
Advances in Engineering Software, 94:46–59, April 2016.
arXiv: 1509.03604.
- [5] M. Hussain, F. Reitsma, M.H. Subki, and H. Kiuchi.
Advances in Small Modular Reactor Technology Developments.
A Supplement to: IAEA Advanced Reactors Information System (ARIS), Nuclear Power Technology Development Section, Division of Nuclear Power of the IAEA Department of Nuclear Energy, Vienna, Austria, September 2018.

References II



[6] Mark Mitchell.

USNC Micro Modular Reactor – Project and Fuel, April 2020.